

K+B B

DESIGN + INNOVATION + LIFESTYLE

products

kbis trends

hot cabinetry



KITCHEN AND BATH BUSINESS / MAY/JUNE 2011

WWW.KBBONLINE.COM \$10 U.S.

THE OFFICIAL SPONSOR OF



What's Hot In Kitchen Cabinets



Allmilmö's Senza eschews handles for a cleaner, streamlined look. Offered in a wide range of finishes, including a white textured Diamond lacquer (shown), the collection features a 14-in.-deep pullout "floating" cabinet with a heat-resistant glass worktop that serves as a landing area. Base units have enameled glass countertops, and cabinet doors and drawers are equipped with a touch-latch opening mechanism or a channel for easy gripping. Motorized doors are also available, as are a variety of accessories. Most appliances can be fully integrated. **Circle No. 206**



Plain & Fancy's Driftwood Collection evokes the beauty of the ocean shore with oak cabinetry that has been sanded, washed with a white stain, hand-glazed and then finished with a low-sheen top-coat. Available in Silver Shore, Drift Scape and Weathered Stone finishes, it features doors with 2¹/₄-in.-wide stiles and rails and solid-wood center panels with 2-in. machined beads. **Circle No. 210**



Bazzèo's newest addition to its Gaia series is Gaia Tech, a line of cabinets created for those with limited space who want to conceal their kitchen. Offered in a wide array of colors and finishes, including Corian, and formed of recycled and regenerated wood, it features sliding components that enable the island to function as a cooking, dining and entertainment area. When not in use, the cooktop and prep area can be concealed with a push of a button. Storage and laundry are enclosed by large glass sliding doors. **Circle No. 211**



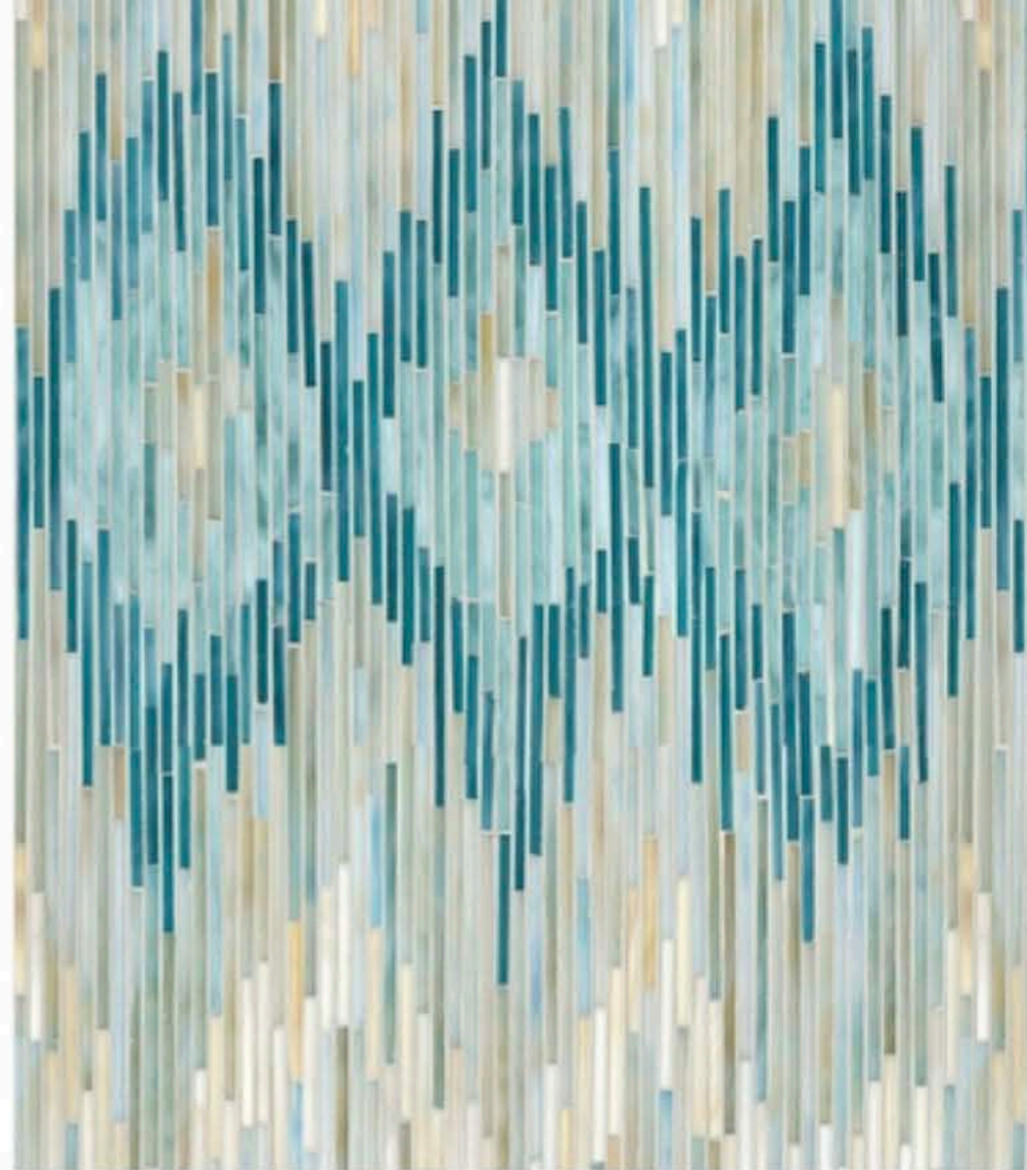
A modern spin on the Shaker door, Trevant from **Armstrong Cabinets** is a full overlay design that features a 3/4-in.-thick solid door-frame with maple wood panels and wide stiles and rails. To show off the wood grain, the line is offered in a clear finish and includes both slab and five-piece drawer fronts, assembled with mortise and tenon joints. **Circle No. 212**

From kitchen designer Susan Serra, CKD, CAPS, and her daughter, Kelly Serra Donovan, comes **Bornholm Kitchen**, a collection of made-to-order cabinetry, islands and vanities inspired by its namesake, an island off the coast of Denmark. Available in natural walnut and rift oak with scalloped/elliptical drawer cutouts and exposed mortise and tenon joinery, as well as doors that feature 2³/₄-in.-thick top and bottom rails, all of the units are made-to-order and sustainably handcrafted in the United States. **Circle No. 213**

What's Cool Everywhere Else



From **Cambria** comes the Waterstone Collection of quartz surfaces inspired by the movement of water over stone. Encompassing a broad range of hues and patterns, the line is comprised of 12 colors named after locations in Wales and England, including Aberdeen, Bellingham, Braemar (shown), Buckingham, New Quay, Newport, Praa Sands, Sharp-ham, Shirebrook, Torquay, Wellington and Westminster. **Circle No. 214**



New Ravenna Mosaics' newest, Ikat was inspired by leaf patterns in Uzbekistani textiles and comprises two designs: Loom (shown here in glass in Quartz, Aqua-marine, Tanzanite and Turquoise colors) and Weft. Both are handcrafted to custom sizes. **Circle No. 216**



Measuring 96 in. x 30 in. x 22 in., **Diamond Spas'** Sozo Bath was designed to use less water than other luxury models—just 60 gallons for an average-sized bather. Its interior features tapered walls and a shape that supports the user in a fully reclined position, thus requiring a lower overall depth for soaking. It is formed of 60 percent to 80 percent recycled stainless steel or 90 percent to 95 percent recycled copper. A coordinating sink is available. **Circle No. 215**



Newcomer **Evan Stone Art Decor** has introduced a line of artisan natural stone tiles that incorporate glass and decorative elements such as silk flowers and seashells (shown). The tiles are offered in 4-in. x 4-in., 6-in. x 6-in., 12-in. x 12-in. and 18-in. x 18-in. formats and can be custom designed. Metal and stone tiles are also available. **Circle No. 217**



Liebherr's 2060 series of refrigerators has added two new large-capacity single-door models: the 36-in. CS 2060, a freestanding unit, and the 36-in. HC 2060, a fully integrated version. Both boast nearly 20 cu. ft. of capacity and feature uninterrupted shelving to accommodate oversized platters, one full-width drawer, two deep drawers, gallon holders and double freezer drawers, as well as LED lighting and an ice maker with water filtration. Both are also Energy Star-rated. **Circle No. 232**



Offering water-efficient performance in a streamlined contemporary design, American Standard's Studio Faucet Collection comprises single-control and widespread lav faucets, a deck-mounted tub filler and a bath/shower faucet. The line features ADA-compliant lever handles, and the lav and shower models are WaterSense-certified. All are available in polished chrome or satin nickel. **Circle No. 233**

TIMELESS BEAUTY. IMAGINED NATURALLY.*

It's about more than the end product. What we do along the way to create kitchen cabinets worth owning, is just as important to us as the finished product. Kountry Wood Products does its part in building sustainable cabinetry. From raw material sourcing and management to environmentally conscious manufacturing and recycling processes, we take care in creating a cabinet that is good for today's owners and for future lives to come.

Classic Select
Santa Fe Alder

Georgetown
Espresso Maple

Classic
Dutch Oak

Princeton
Cider Cherry



P.O. Box 530, Nappanee, IN 46550 888-608-8969 www.kountrywood.com "Kitchen Cabinets Worth Owning"